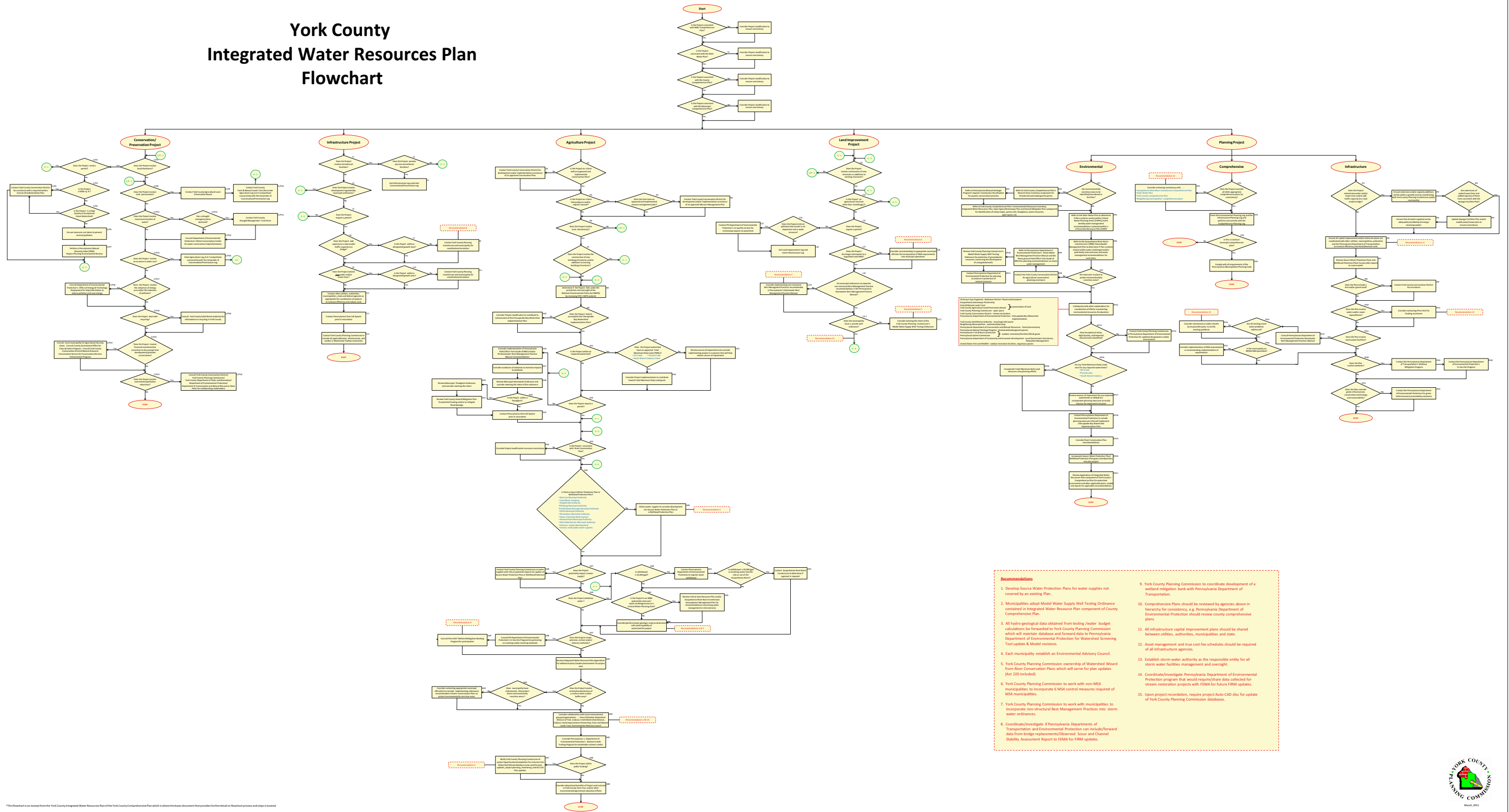


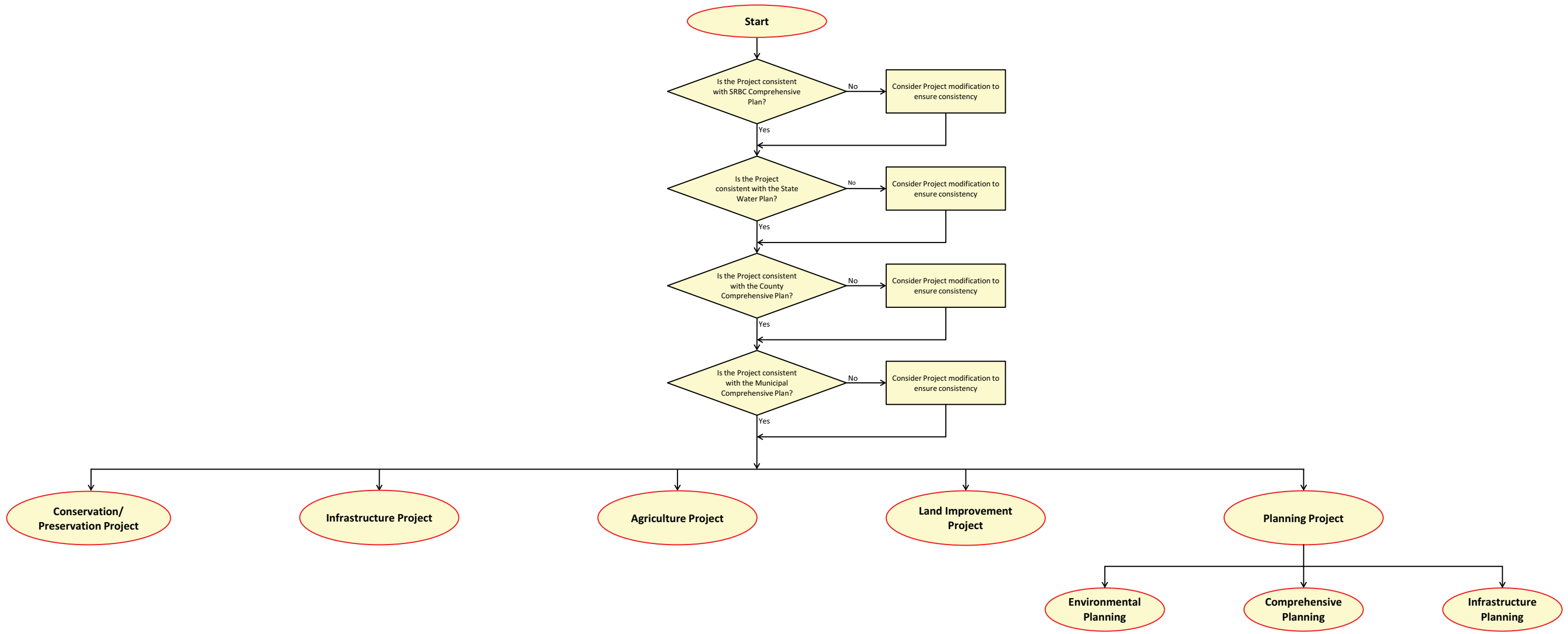
York County Integrated Water Resources Plan Flowchart

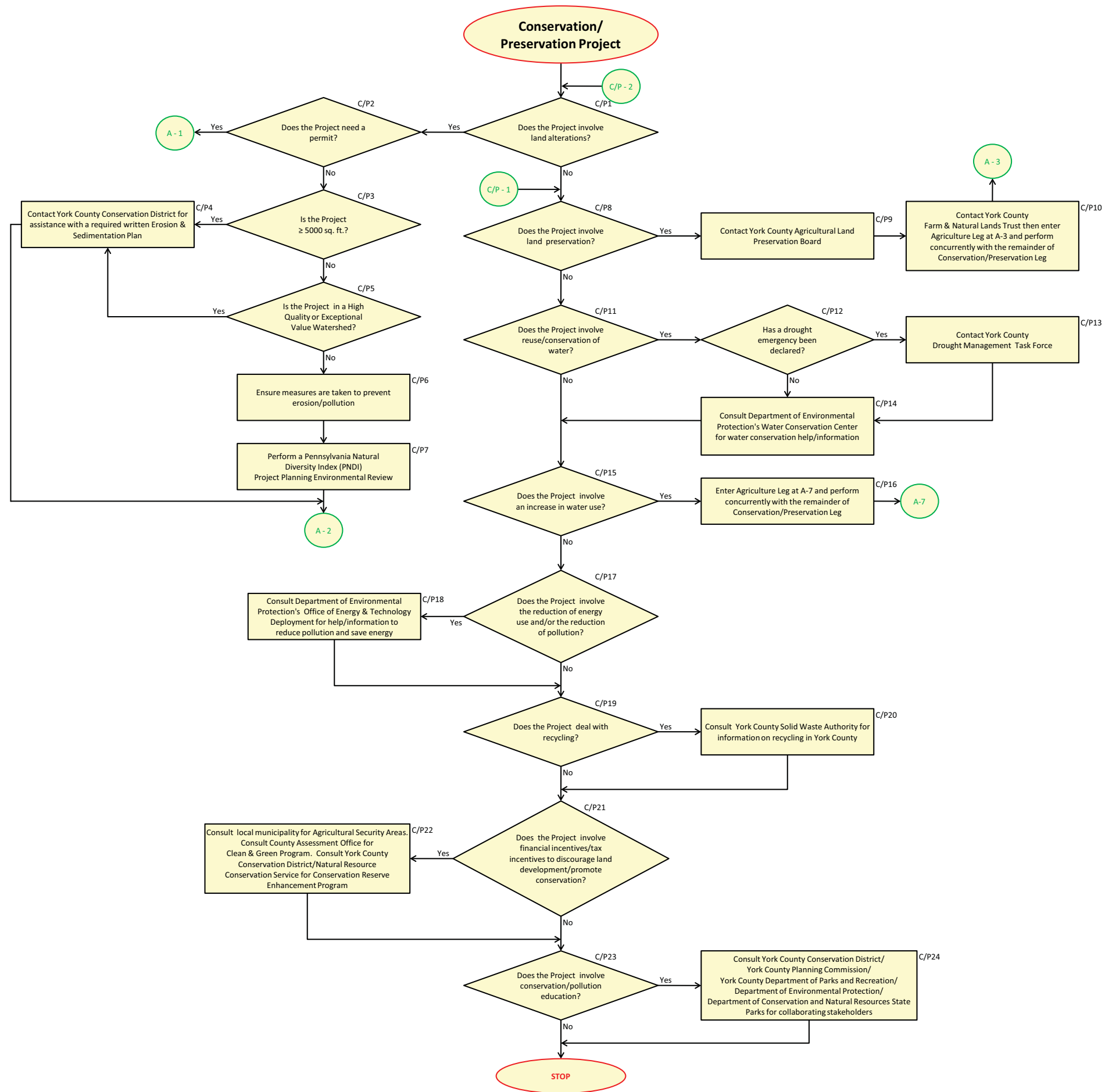


*This flowchart is an excerpt from the York County Integrated Water Resources Plan of the York County Comprehensive Plan which is where the basic document that provides further detail on flowchart process and steps is located.

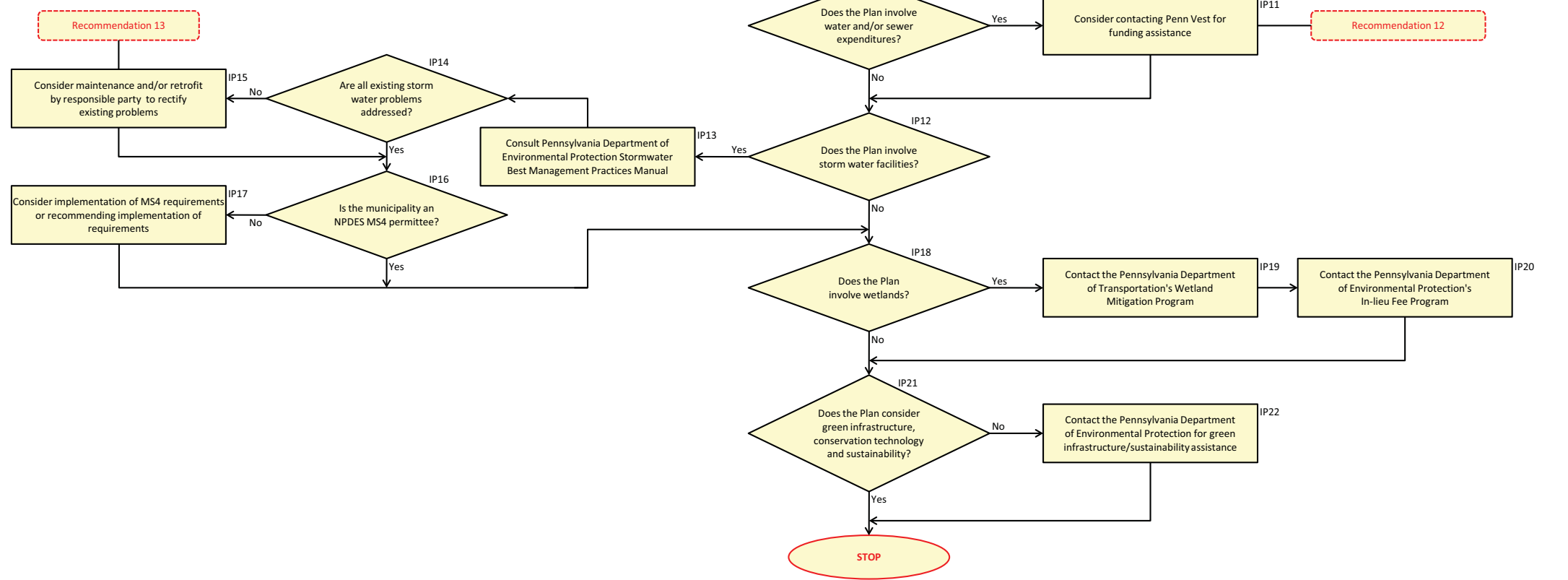
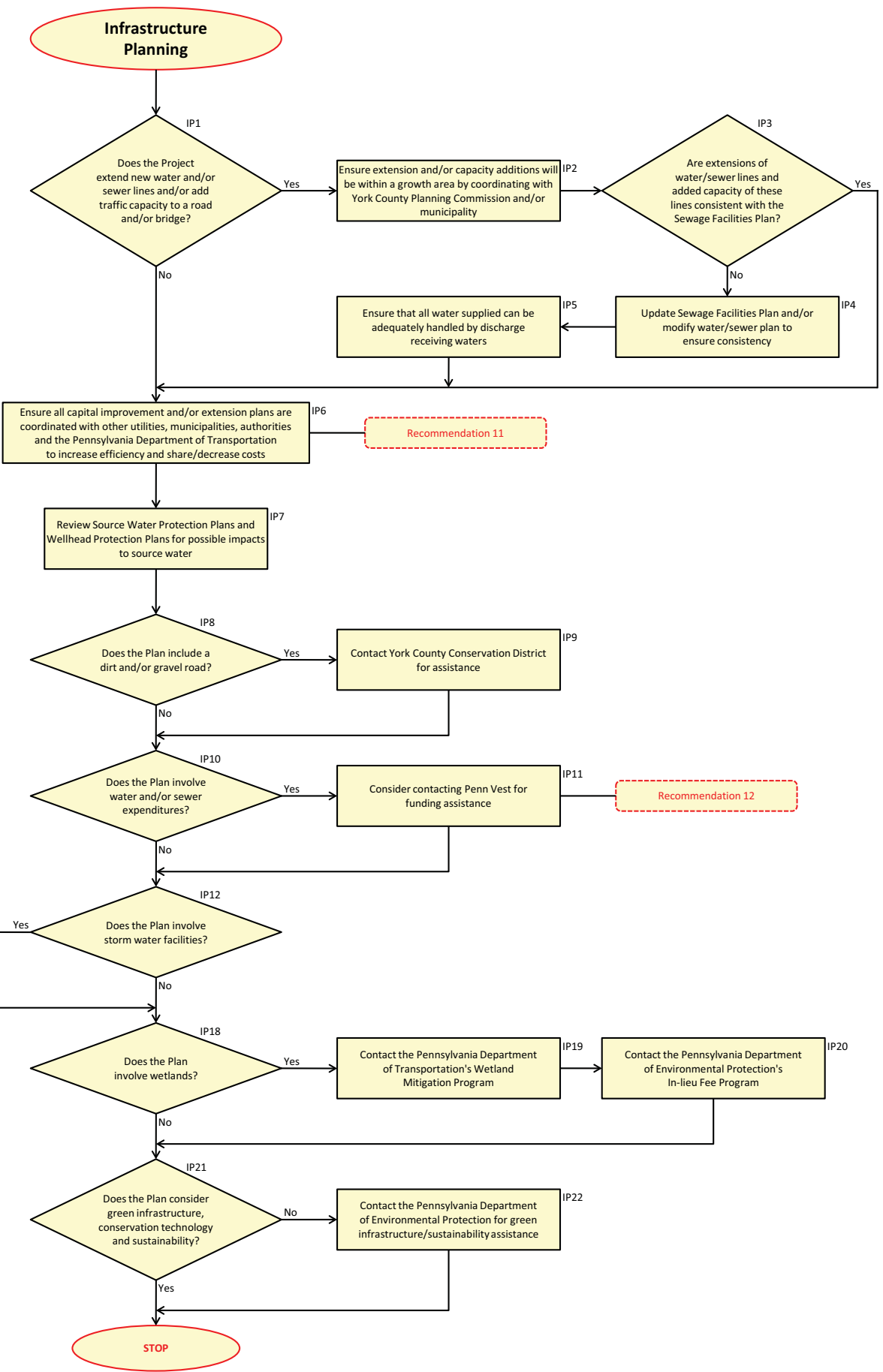


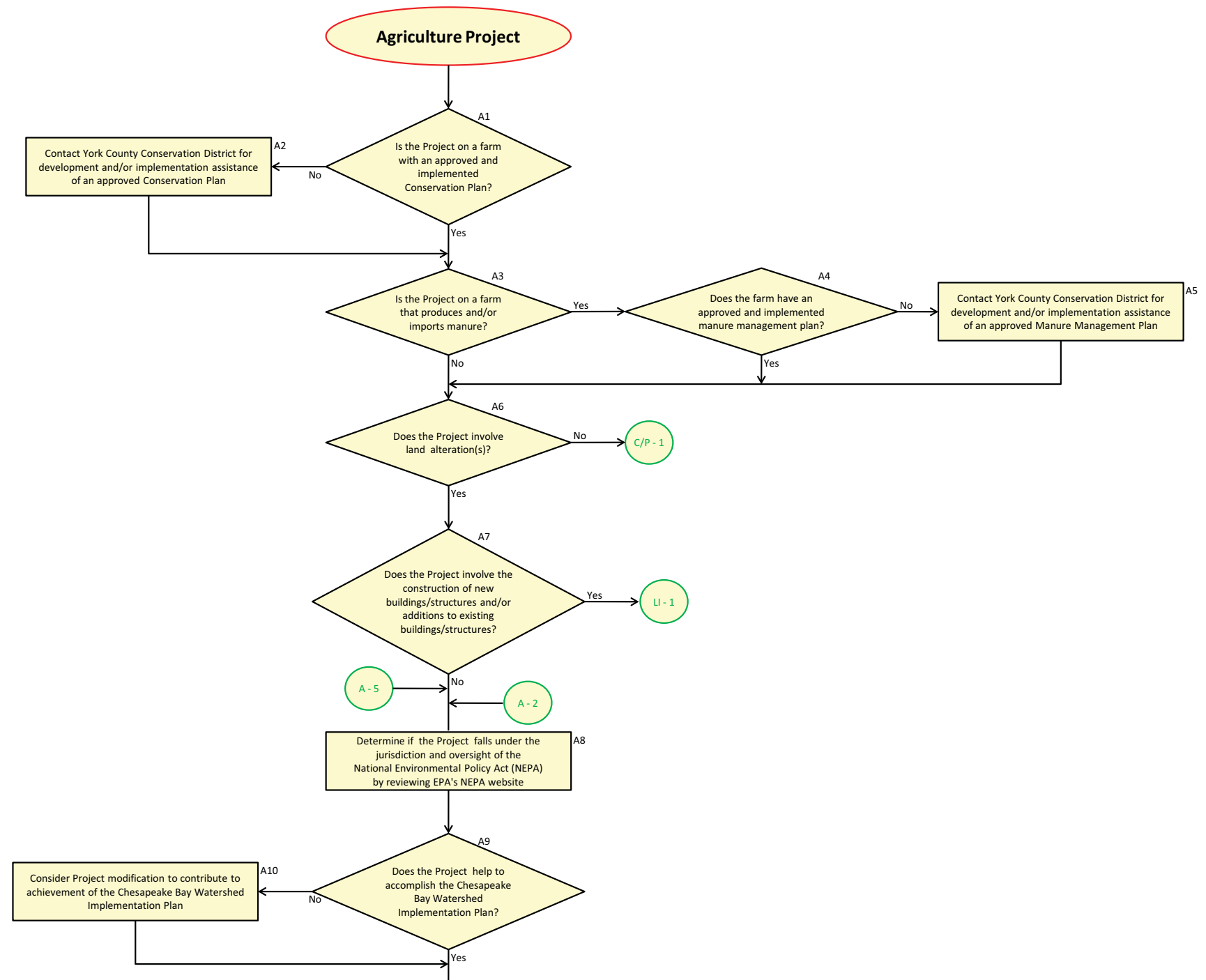
* It is recognized that the scale of the flowchart on this page renders it unreadable. The intent of this page is to illustrate how the legible flowchart legs on the following pages are joined into one large flowchart (plan).

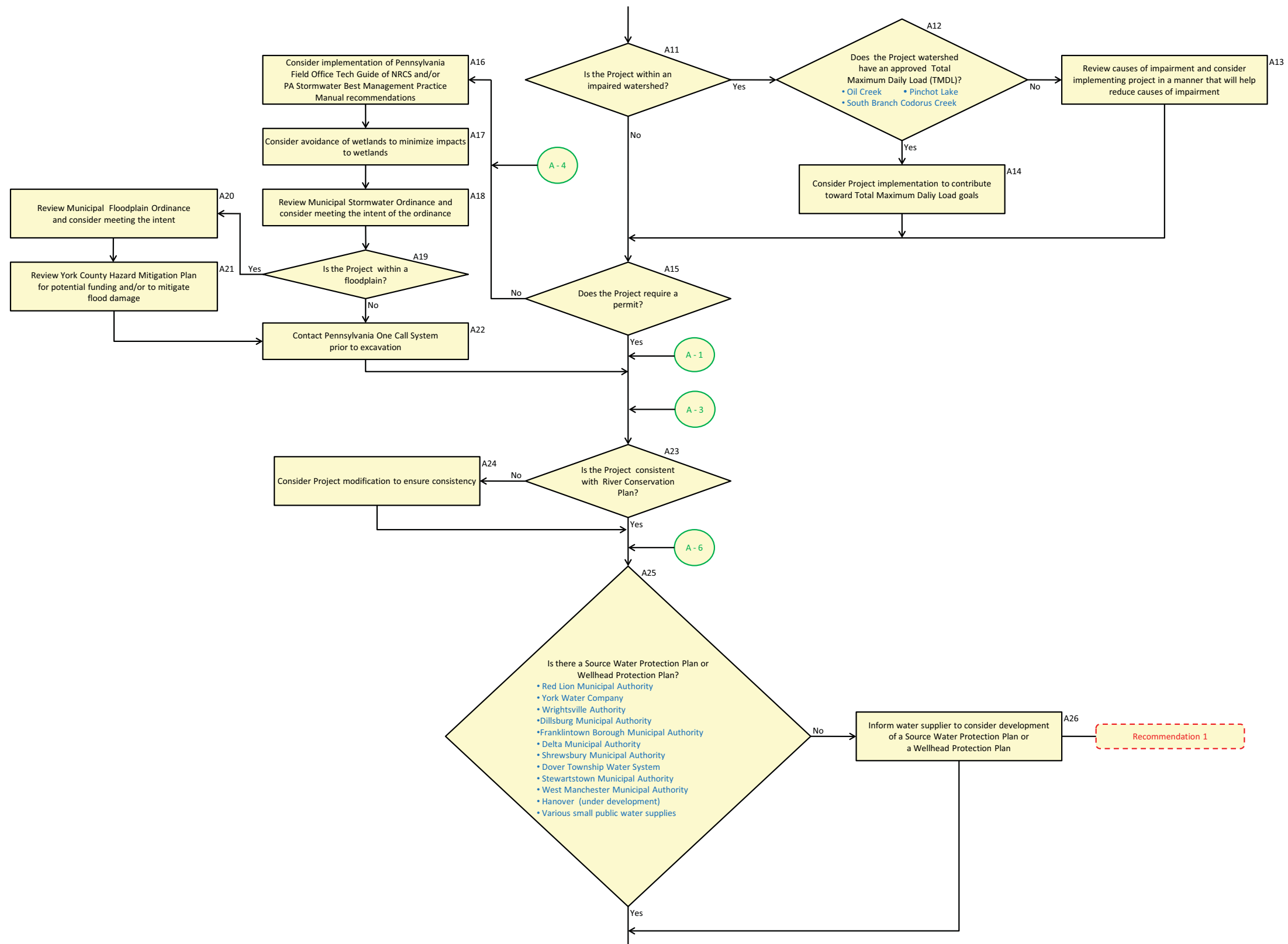


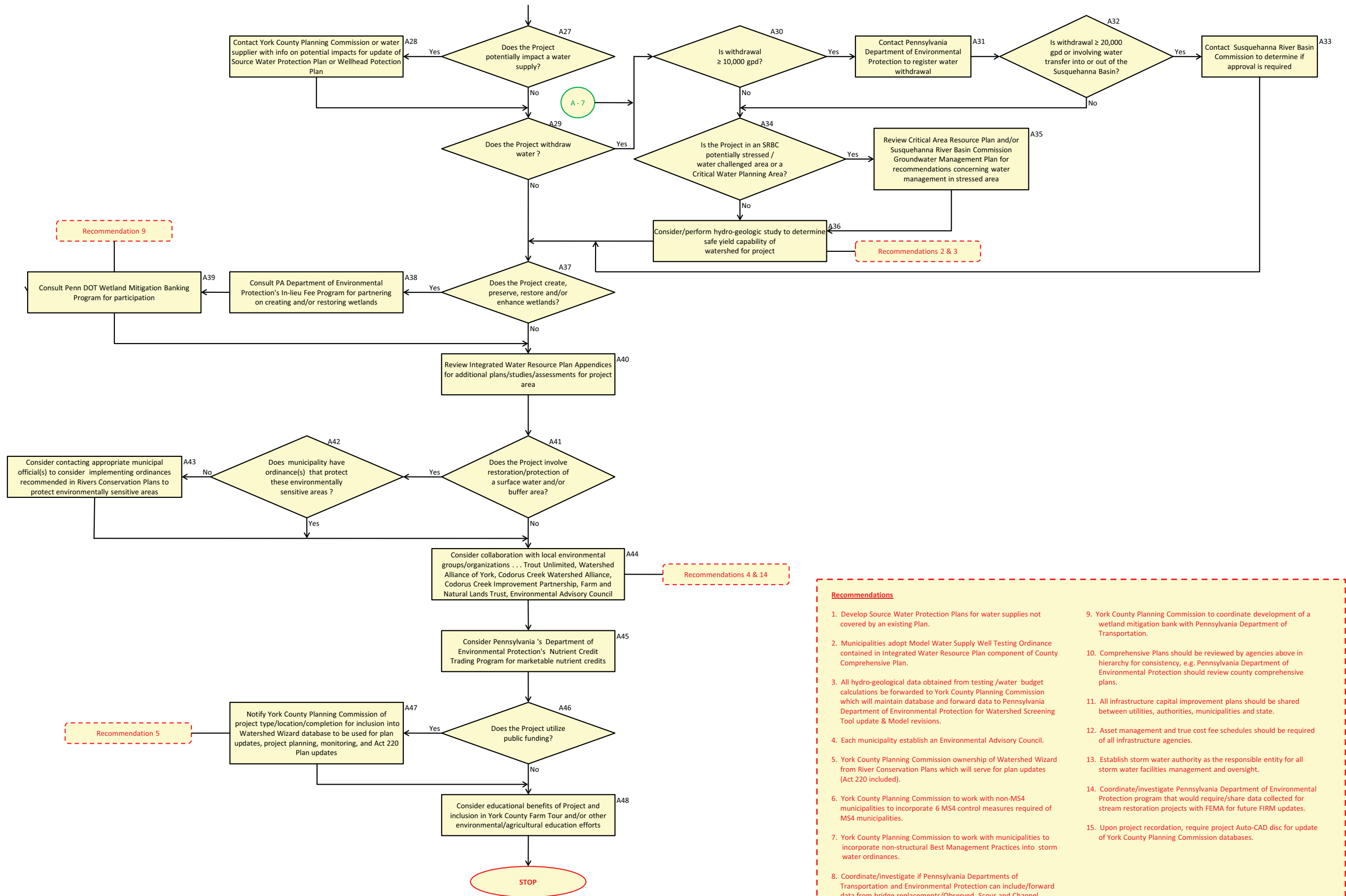


- Recommendations**
- Develop Source Water Protection Plans for water supplies not covered by an existing Plan.
 - Municipalities adopt Model Water Supply Well Testing Ordinance contained in Integrated Water Resource Plan component of County Comprehensive Plan.
 - All hydro-geological data obtained from testing /water budget calculations be forwarded to York County Planning Commission which will maintain database and forward data to Pennsylvania Department of Environmental Protection for Watershed Screening Tool update & Model revisions.
 - Each municipality establish an Environmental Advisory Council.
 - York County Planning Commission ownership of Watershed Wizard from River Conservation Plans which will serve for plan updates (Act 220 included).
 - York County Planning Commission to work with non-MS4 municipalities to incorporate 6 MS4 control measures required of MS4 municipalities.
 - York County Planning Commission to work with municipalities to incorporate non-structural Best Management Practices into storm water ordinances.
 - Coordinate/investigate if Pennsylvania Departments of Transportation and Environmental Protection can include/forward data from bridge replacements/Observed Scour and Channel Stability Assessment Report to FEMA for FIRM updates.
 - York County Planning Commission to coordinate development of a wetland mitigation bank with Pennsylvania Department of Transportation.
 - Comprehensive Plans should be reviewed by agencies above in hierarchy for consistency, e.g. Pennsylvania Department of Environmental Protection should review county comprehensive plans.
 - All infrastructure capital improvement plans should be shared between utilities, authorities, municipalities and state.
 - Asset management and true cost fee schedules should be required of all infrastructure agencies.
 - Establish storm water authority as the responsible entity for all storm water facilities management and oversight.
 - Coordinate/investigate Pennsylvania Department of Environmental Protection program that would require/share data collected for stream restoration projects with FEMA for future FIRM updates.
 - Upon project recordation, require project Auto-CAD disc for update of York County Planning Commission databases.



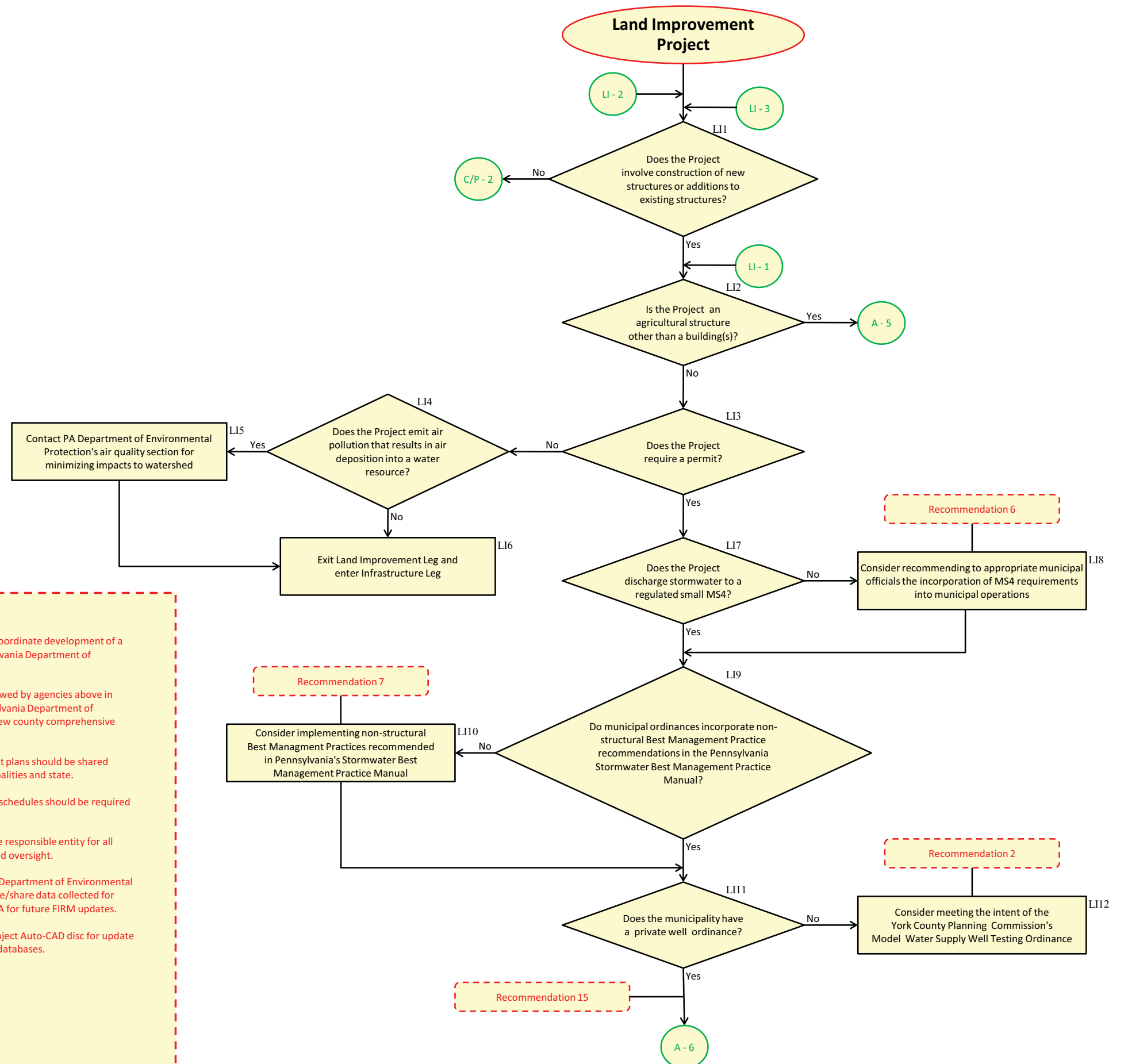


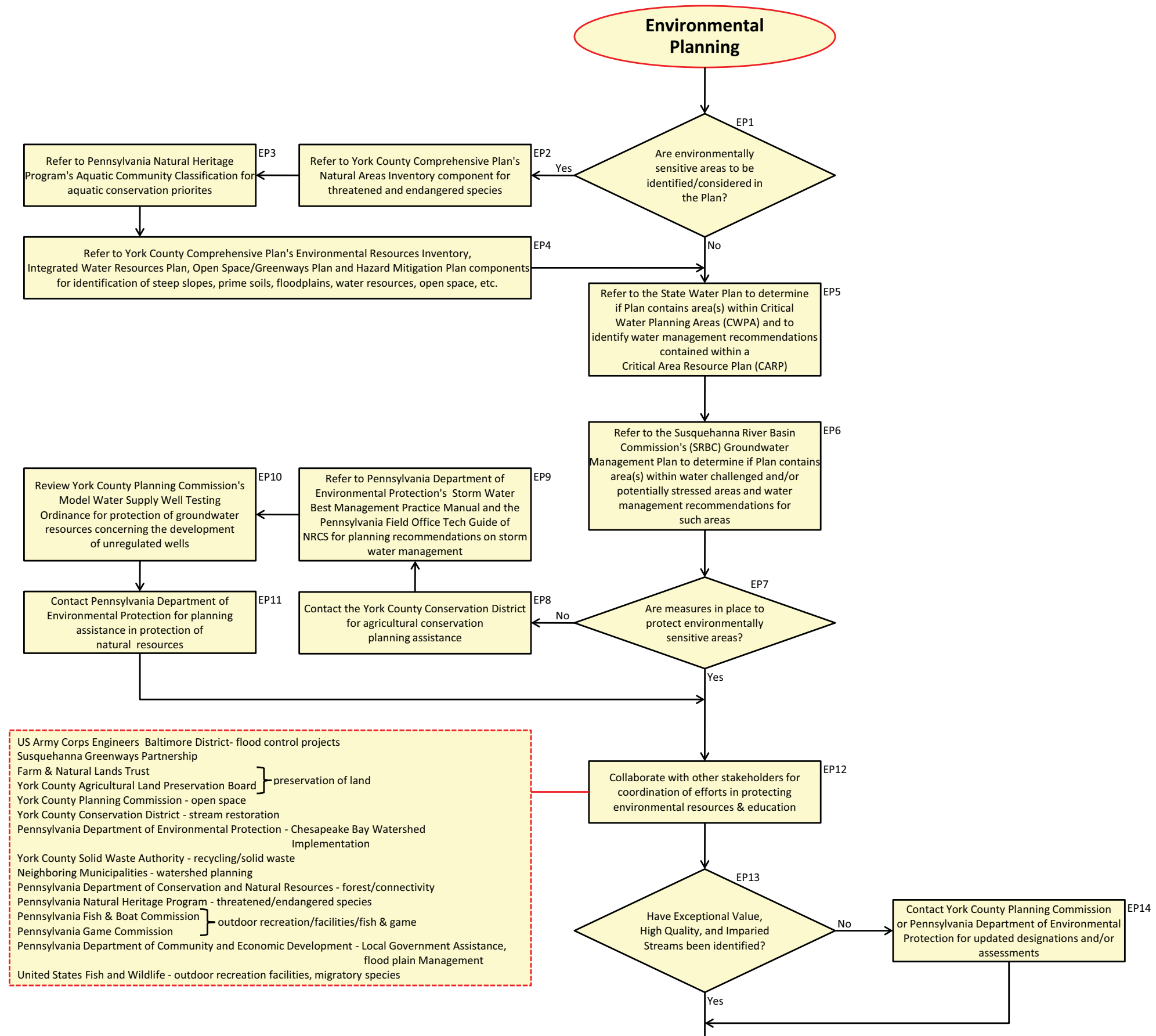




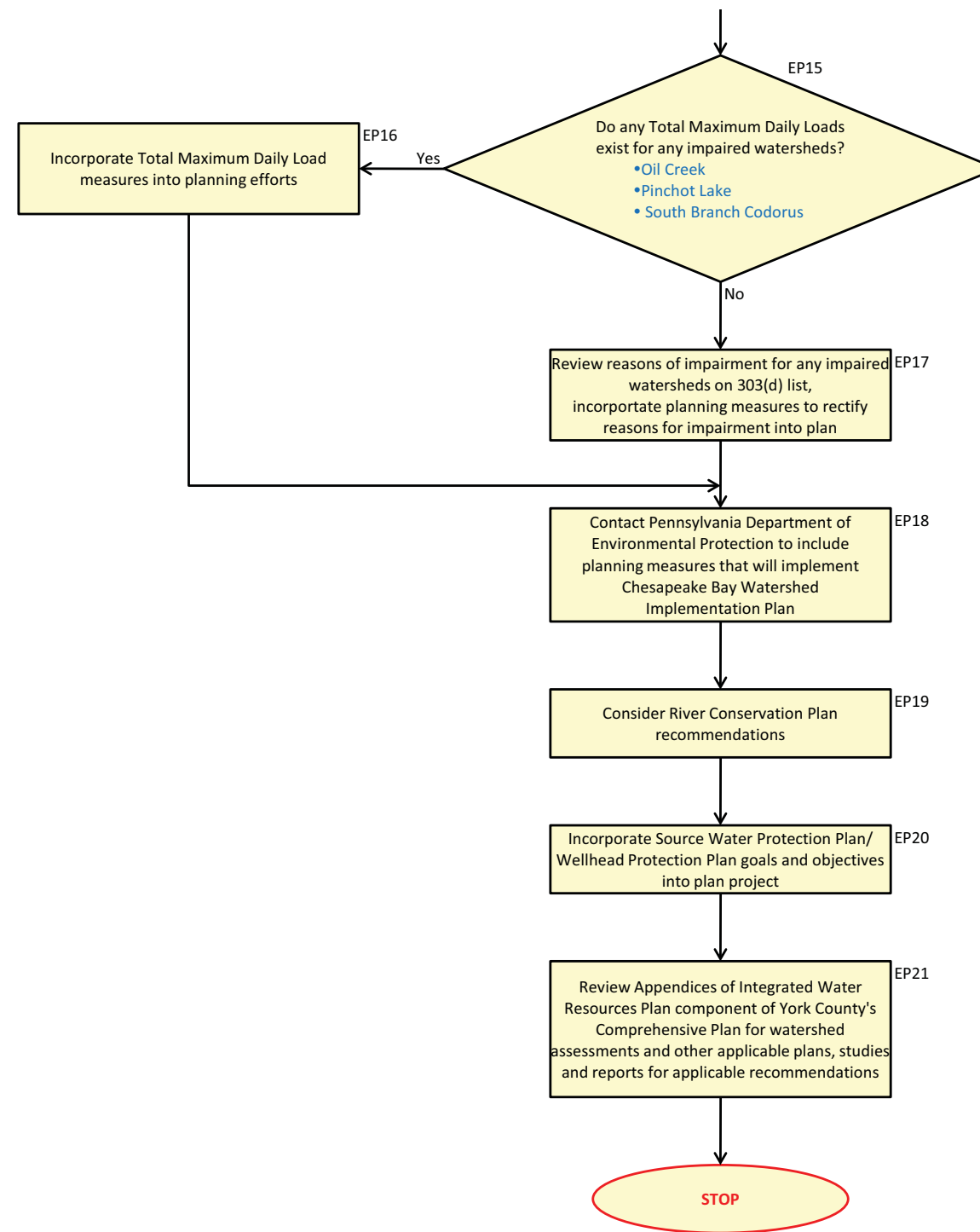
- Recommendations**
- Develop Source Water Protection Plans for water supplies not covered by an existing Plan.
 - Municipalities adopt Model Water Supply Well Testing Ordinance contained in Integrated Water Resource Plan component of County Comprehensive Plan.
 - All hydro-geological data obtained from testing /water budget calculations be forwarded to York County Planning Commission which will maintain database and forward data to Pennsylvania Department of Environmental Protection for Watershed Screening Tool update & Model revisions.
 - Each municipality establish an Environmental Advisory Council.
 - York County Planning Commission ownership of Watershed Wizard from River Conservation Plans which will serve for plan updates (Act 220 included).
 - York County Planning Commission to work with non-MS4 municipalities to incorporate 6 MS4 control measures required of MS4 municipalities.
 - York County Planning Commission to work with municipalities to incorporate non-structural Best Management Practices into storm water ordinances.
 - Coordinate/investigate if Pennsylvania Departments of Transportation and Environmental Protection can include/forward data from bridge replacements/Observed Scour and Channel
 - York County Planning Commission to coordinate development of a wetland mitigation bank with Pennsylvania Department of Transportation.
 - Comprehensive Plans should be reviewed by agencies above in hierarchy for consistency, e.g. Pennsylvania Department of Environmental Protection should review county comprehensive plans.
 - All infrastructure capital improvement plans should be shared between utilities, authorities, municipalities and state.
 - Asset management and true cost fee schedules should be required of all infrastructure agencies.
 - Establish storm water authority as the responsible entity for all storm water facilities management and oversight.
 - Coordinate/investigate Pennsylvania Department of Environmental Protection program that would require/share data collected for stream restoration projects with FEMA for future FIRM updates.
 - Upon project recordation, require project Auto-CAD disc for update of York County Planning Commission databases.

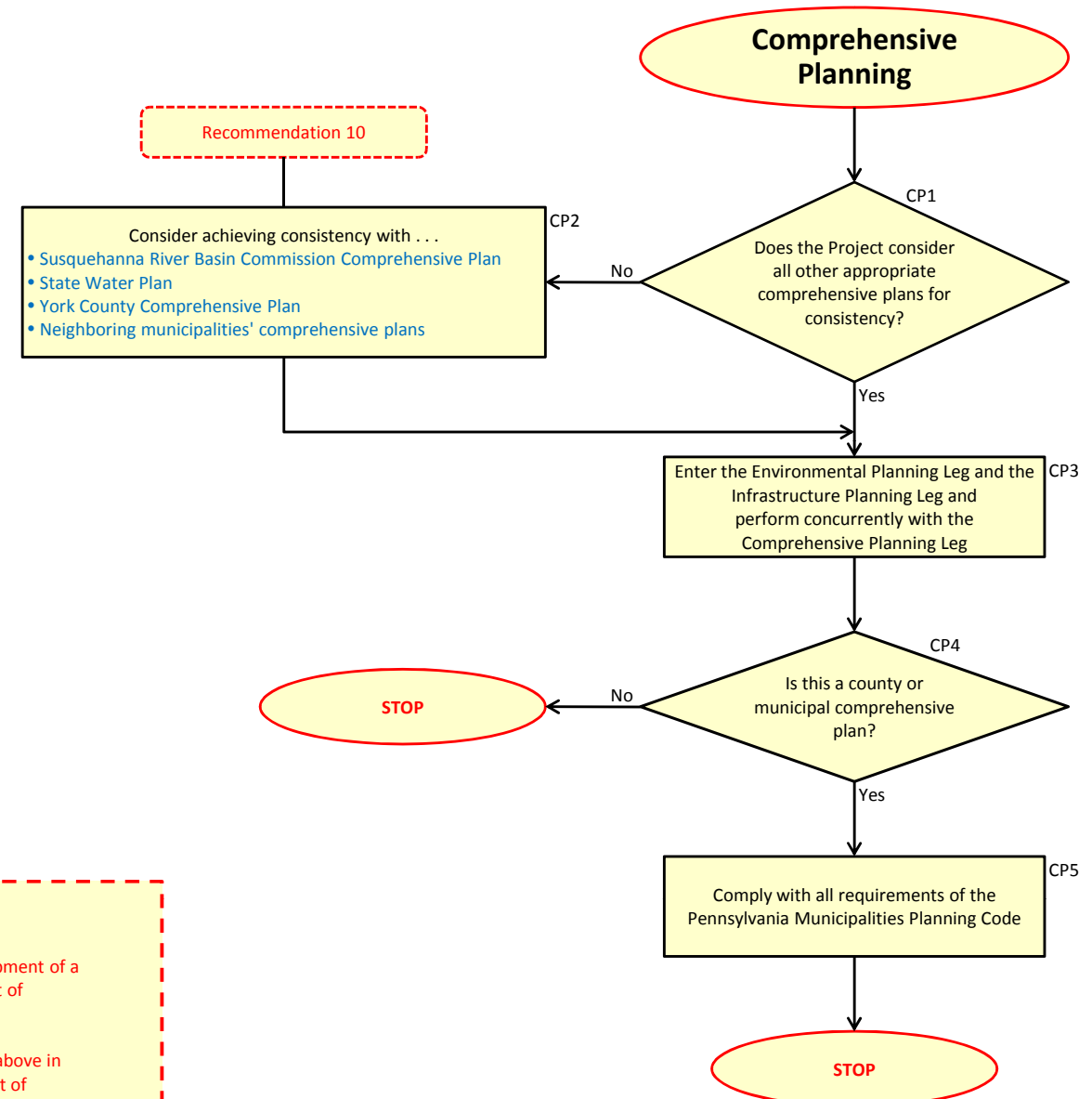
- Recommendations**
1. Develop Source Water Protection Plans for water supplies not covered by an existing Plan.
 2. Municipalities adopt Model Water Supply Well Testing Ordinance contained in Integrated Water Resource Plan component of County Comprehensive Plan.
 3. All hydro-geological data obtained from testing /water budget calculations be forwarded to York County Planning Commission which will maintain database and forward data to Pennsylvania Department of Environmental Protection for Watershed Screening Tool update & Model revisions.
 4. Each municipality establish an Environmental Advisory Council.
 5. York County Planning Commission ownership of Watershed Wizard from River Conservation Plans which will serve for plan updates (Act 220 included).
 6. York County Planning Commission to work with non-MS4 municipalities to incorporate 6 MS4 control measures required of MS4 municipalities.
 7. York County Planning Commission to work with municipalities to incorporate non-structural Best Management Practices into storm water ordinances.
 8. Coordinate/investigate if Pennsylvania Departments of Transportation and Environmental Protection can include/forward data from bridge replacements/Observed Scour and Channel Stability Assessment Report to FEMA for FIRM updates.
 9. York County Planning Commission to coordinate development of a wetland mitigation bank with Pennsylvania Department of Transportation.
 10. Comprehensive Plans should be reviewed by agencies above in hierarchy for consistency, e.g. Pennsylvania Department of Environmental Protection should review county comprehensive plans.
 11. All infrastructure capital improvement plans should be shared between utilities, authorities, municipalities and state.
 12. Asset management and true cost fee schedules should be required of all infrastructure agencies.
 13. Establish storm water authority as the responsible entity for all storm water facilities management and oversight.
 14. Coordinate/investigate Pennsylvania Department of Environmental Protection program that would require/share data collected for stream restoration projects with FEMA for future FIRM updates.
 15. Upon project recordation, require project Auto-CAD disc for update of York County Planning Commission databases.





- US Army Corps Engineers - Baltimore District- flood control projects
- Susquehanna Greenways Partnership
- Farm & Natural Lands Trust
- York County Agricultural Land Preservation Board } preservation of land
- York County Planning Commission - open space
- York County Conservation District - stream restoration
- Pennsylvania Department of Environmental Protection - Chesapeake Bay Watershed Implementation
- York County Solid Waste Authority - recycling/solid waste
- Neighboring Municipalities - watershed planning
- Pennsylvania Department of Conservation and Natural Resources - forest/connectivity
- Pennsylvania Natural Heritage Program - threatened/endangered species
- Pennsylvania Fish & Boat Commission } outdoor recreation/facilities/fish & game
- Pennsylvania Game Commission
- Pennsylvania Department of Community and Economic Development - Local Government Assistance, flood plain Management
- United States Fish and Wildlife - outdoor recreation facilities, migratory species





- Recommendations**
- | | |
|---|---|
| <ol style="list-style-type: none"> 1. Develop Source Water Protection Plans for water supplies not covered by an existing Plan. 2. Municipalities adopt Model Water Supply Well Testing Ordinance contained in Integrated Water Resource Plan component of County Comprehensive Plan. 3. All hydro-geological data obtained from testing /water budget calculations be forwarded to York County Planning Commission which will maintain database and forward data to Pennsylvania Department of Environmental Protection for Watershed Screening Tool update & Model revisions. 4. Each municipality establish an Environmental Advisory Council. 5. York County Planning Commission ownership of Watershed Wizard from River Conservation Plans which will serve for plan updates (Act 220 included). 6. York County Planning Commission to work with non-MS4 municipalities to incorporate 6 MS4 control measures required of MS4 municipalities. 7. York County Planning Commission to work with municipalities to incorporate non-structural Best Management Practices into storm water ordinances. 8. Coordinate/investigate if Pennsylvania Departments of Transportation and Environmental Protection can include/forward data from bridge replacements/Observed Scour and Channel | <ol style="list-style-type: none"> 9. York County Planning Commission to coordinate development of a wetland mitigation bank with Pennsylvania Department of Transportation. 10. Comprehensive Plans should be reviewed by agencies above in hierarchy for consistency, e.g. Pennsylvania Department of Environmental Protection should review county comprehensive plans. 11. All infrastructure capital improvement plans should be shared between utilities, authorities, municipalities and state. 12. Asset management and true cost fee schedules should be required of all infrastructure agencies. 13. Establish storm water authority as the responsible entity for all storm water facilities management and oversight. 14. Coordinate/investigate Pennsylvania Department of Environmental Protection program that would require/share data collected for stream restoration projects with FEMA for future FIRM updates. 15. Upon project recordation, require project Auto-CAD disc for update of York County Planning Commission databases. |
|---|---|

- Recommendations**
1. Develop Source Water Protection Plans for water supplies not covered by an existing Plan.
 2. Municipalities adopt Model Water Supply Well Testing Ordinance contained in Integrated Water Resource Plan component of County Comprehensive Plan.
 3. All hydro-geological data obtained from testing /water budget calculations be forwarded to York County Planning Commission which will maintain database and forward data to Pennsylvania Department of Environmental Protection for Watershed Screening Tool update & Model revisions.
 4. Each municipality establish an Environmental Advisory Council.
 5. York County Planning Commission ownership of Watershed Wizard from River Conservation Plans which will serve for plan updates (Act 220 included).
 6. York County Planning Commission to work with non-MS4 municipalities to incorporate 6 MS4 control measures required of MS4 municipalities.
 7. York County Planning Commission to work with municipalities to incorporate non-structural Best Management Practices into storm water ordinances.
 8. Coordinate/investigate if Pennsylvania Departments of Transportation and Environmental Protection can include/forward data from bridge replacements/Observed Scour and Channel Stability Assessment Report to FEMA for FIRM updates.
 9. York County Planning Commission to coordinate development of a wetland mitigation bank with Pennsylvania Department of Transportation.
 10. Comprehensive Plans should be reviewed by agencies above in hierarchy for consistency, e.g. Pennsylvania Department of Environmental Protection should review county comprehensive plans.
 11. All infrastructure capital improvement plans should be shared between utilities, authorities, municipalities and state.
 12. Asset management and true cost fee schedules should be required of all infrastructure agencies.
 13. Establish storm water authority as the responsible entity for all storm water facilities management and oversight.
 14. Coordinate/investigate Pennsylvania Department of Environmental Protection program that would require/share data collected for stream restoration projects with FEMA for future FIRM updates.
 15. Upon project recordation, require project Auto-CAD disc for update of York County Planning Commission databases.

